

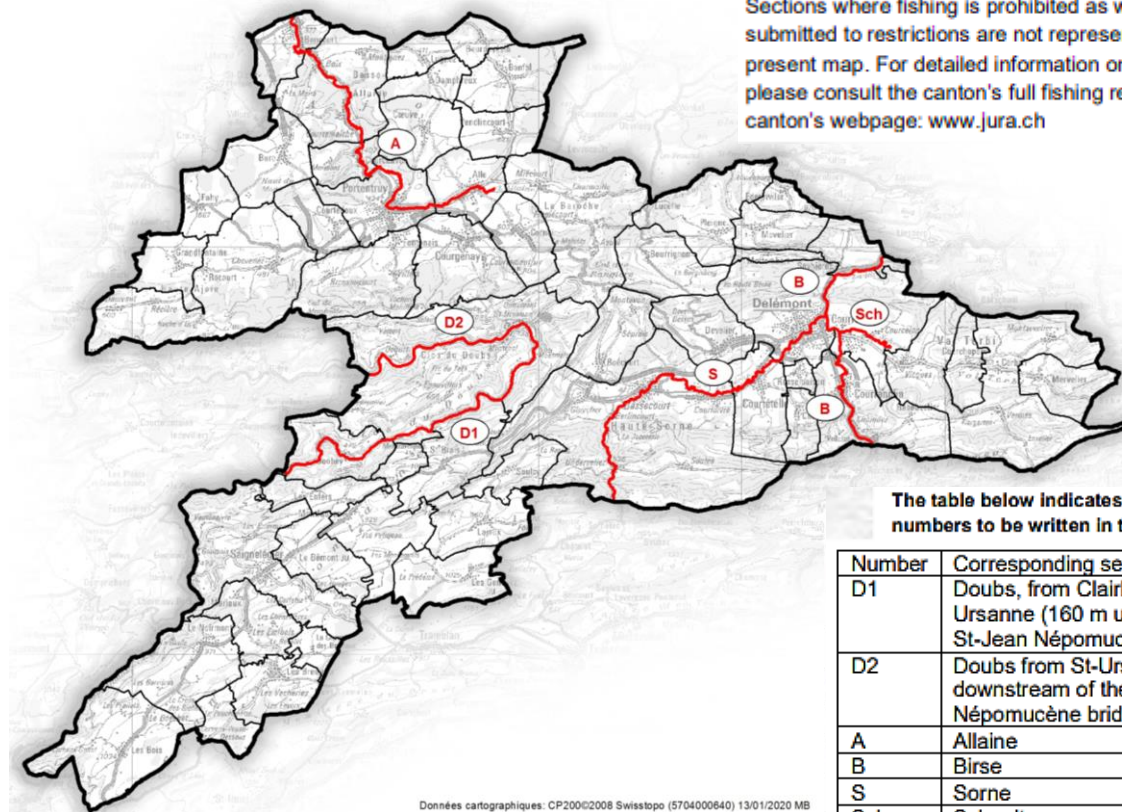
BASE INFORMATION ON THE EXERCISE OF FISHING

to the attention of holders of a short-term permit.

WHERE TO FISH ?

- On the banks of the Allaine, the Birse, the Sorne, the Doubs and the Scheulte. Only on the **sections marked in red** on the map of waterways open to fishing with a permit below;

Waters open to licensed fishing.
Sections where fishing is prohibited as well as those submitted to restrictions are not represented on the present map. For detailed information on these sections, please consult the canton's full fishing regulation or the canton's webpage: www.jura.ch



The table below indicates the section numbers to be written in the census.

Number	Corresponding section
D1	Doubs, from Clairbief up to St-Ursanne (160 m upstream of the St-Jean Népomucène bridge)
D2	Doubs from St-Ursanne 150 m downstream of the St-Jean Népomucène bridge) to Ocourt
A	Allaine
B	Birse
S	Sorne
Sch	Scheulte

- Fishing reserves** exist on the Doubs, the Allaine and the Birse. They are marked in the field by blue signs with white labels. There are also two **differentiated fly fishing sections** on the Doubs at Soubey and on the Scheulte;
- Fishing from inside the water on the riverbed** is authorized from May 1st to September 30. During this period on the Doubs, the fisherman will nevertheless abstain from wading when the river flow is lower than 6 m³ /s at Ocourt. This measure is displayed on the [navigation page](#) of the ENV website;
- It is forbidden to fish from the top of bridges and footbridges, in reaches and canals, in devices built to guarantee the free movement of fish, as well as from boats, floats or any other craft.

WHAT TO FILL IN ON THE CENSUS FORM ?

- Upon arrival at the site and prior to fishing, the licensee shall indicate on the form the date, time and section to be fished. At the end of the fishing trip, the licensee enters the time on the form in the section reserved for that purpose;
- When the licensee resumes fishing following an interruption or changes of section, a new line will be used and completed in accordance with the indications above;
- Each catch of trout, pike, perch and barbel must be immediately entered in the section reserved for this purpose by means of a vertical tick (with a ballpoint pen).

WITH WHICH MATERIAL IS ALLOWED TO FISH ?

- Fishing can only be done with one rod and one line per angler. It must be always supervised
- Fishing **with barbed hooks is strictly prohibited**;
- Only the following baits may be used: earthworms, dungworms and woodworms; aquatic larvae and other aquatic invertebrates from Jura streams; moths, grasshoppers, crickets, berries and cherries; **dead** cyprinids belonging to the following species: minnow, roach, rudd, chub; artificial flies; lures (spoon, devon, spooned minnow, swimbait) and mounts for dead fish, fitted with a maximum of 2 single or triple hooks.



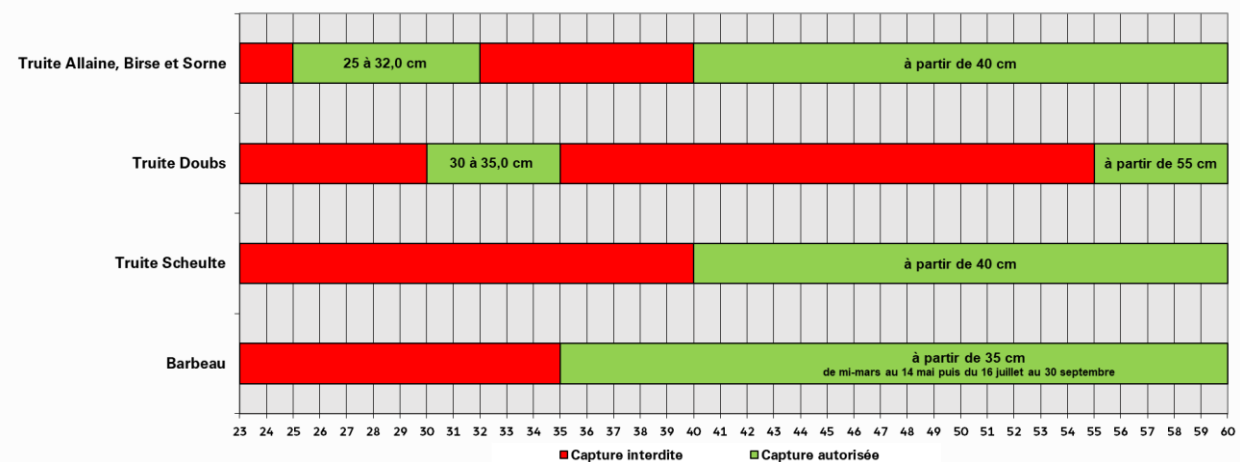
WHAT FISH CAN I CATCH ?

Mainly trout (14 days after the first Saturday of March until September 30) but also pike, perch and some cyprinids. The number of authorized catches and the authorized catch lengths are mentioned below:

COURS D'EAU	QUOTAS TRUITES PAR PERMIS		AUTRES ESPECES PÊCHABLES
	JOURNALIER	HEBDO	
Doubs	2	5	Brochet, perche, cyprinidés à l'exception du blageon et du toxostome
Allaine	3	5	Brochet, perche, carpe, tanche, vairon et chevaine
Birse et Sorne	3	5	Brochet, perche et cyprinidés à l'exception du blageon
Scheulte	2	2	Aucune

Dans le Doubs, le nombre de prise de barbeau est limité à 3 par jour.

Là où la capture du vairon est autorisée, leur nombre est limité à 20 individus par jour



Fish too small or protected: release it

Gently remove the hook with the disgorger. Ideally, this should be done while the fish is still in the water, without touching it. But if the hook is set too deep, gently grasp it and pull it out.

the fish with wet hands without pressing (by holding the belly in the palm of the hand). However, if the hook does not come off immediately, cut the leader just above it and return the fish to the water.

Fish only survive if their gills are fed by well oxygenated water. It is therefore necessary to act quickly and return the fish to the water without throwing it (as to avoid internal injuries). Choose your fishing spot in such a way that you can both bring the fish to shore without any problems and then release it properly. Only well treated fish can survive and possibly be caught later when they have reached the minimum size.



Right size fish: stun it and kill it properly

When the fish is the right size, never remove the hook from it while it is still alive, but only after it has been properly killed. To do this, first stun the fish by giving it one or more vigorous blows on the top of the skull, between the eyes.

Then, bleed it immediately by sticking a sharp knife into the gills, and cut down to the throat, which cuts the blood vessels between the gills and the heart.



The full set of regulations for fishing during the 2023-2026 period can be found [HERE](#).