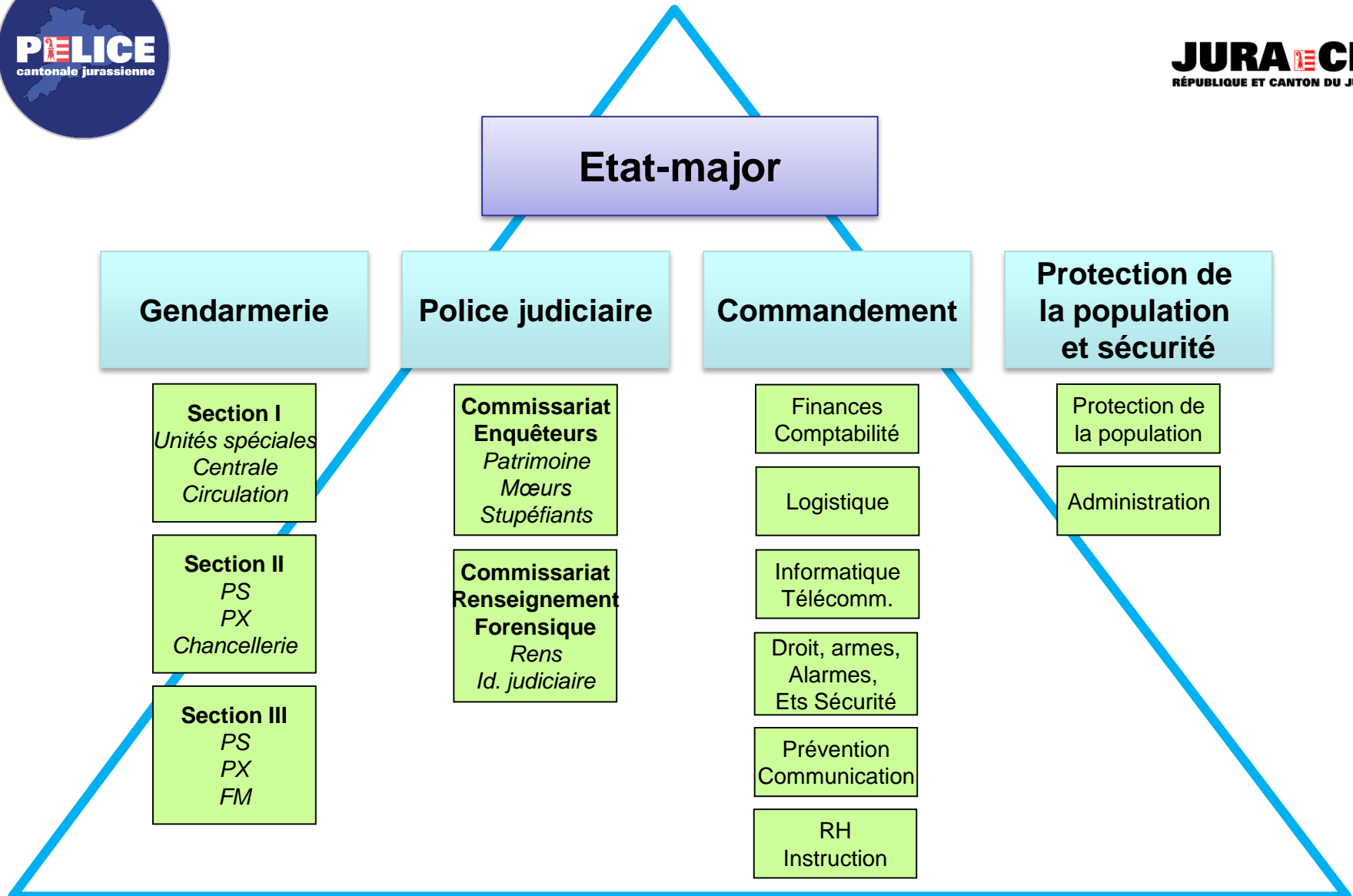
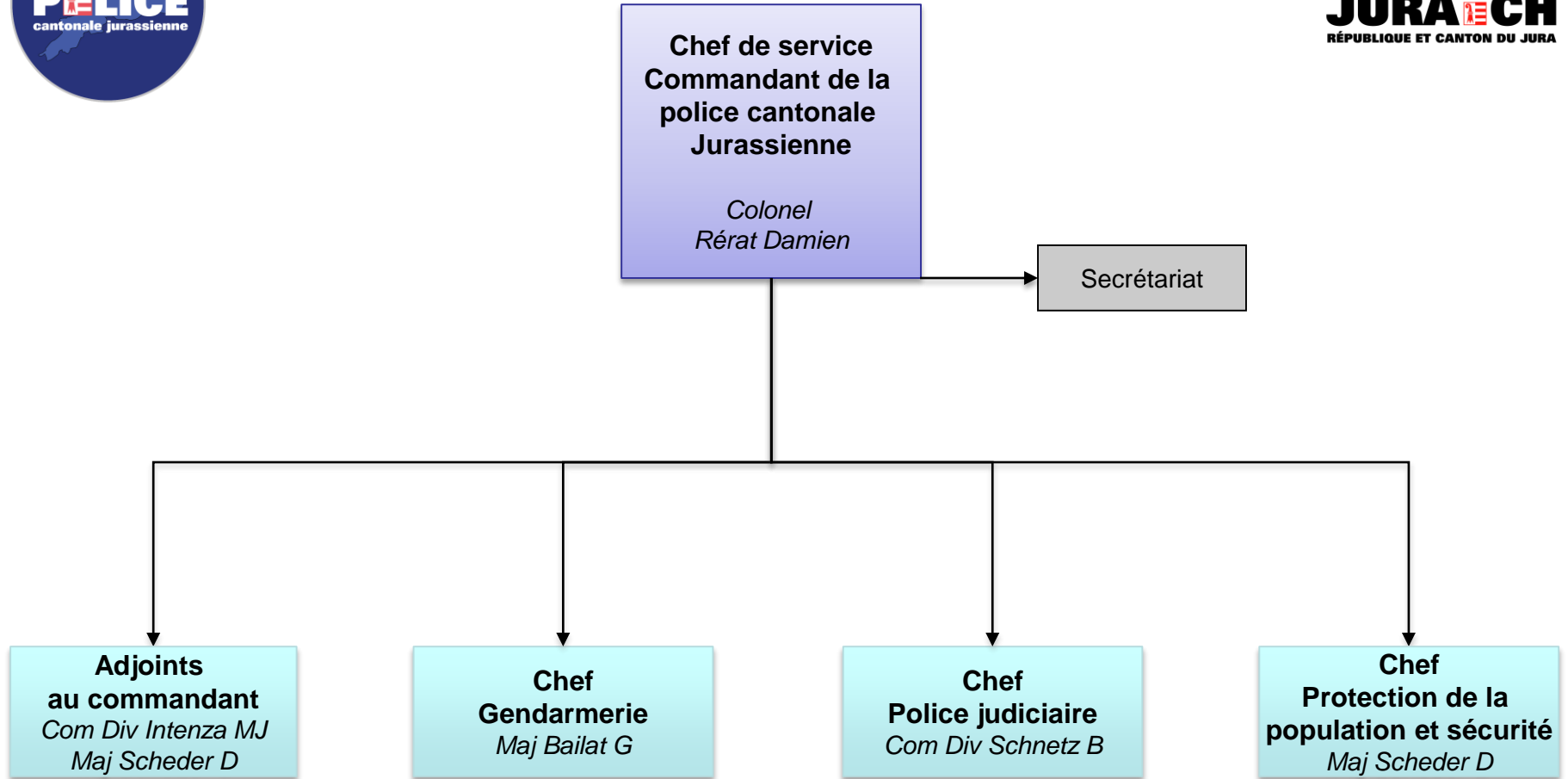




Organisation générale



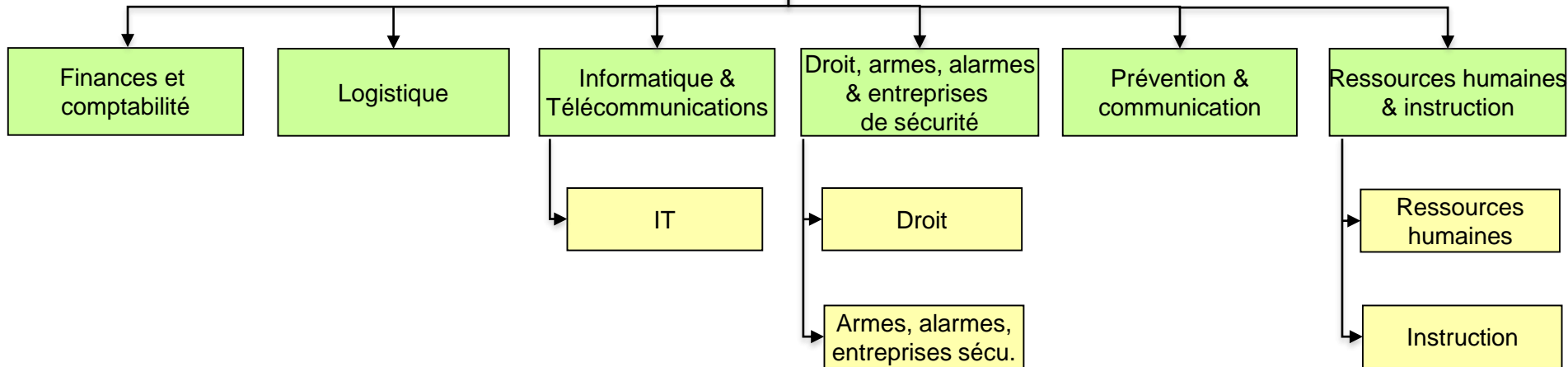
Etat-major



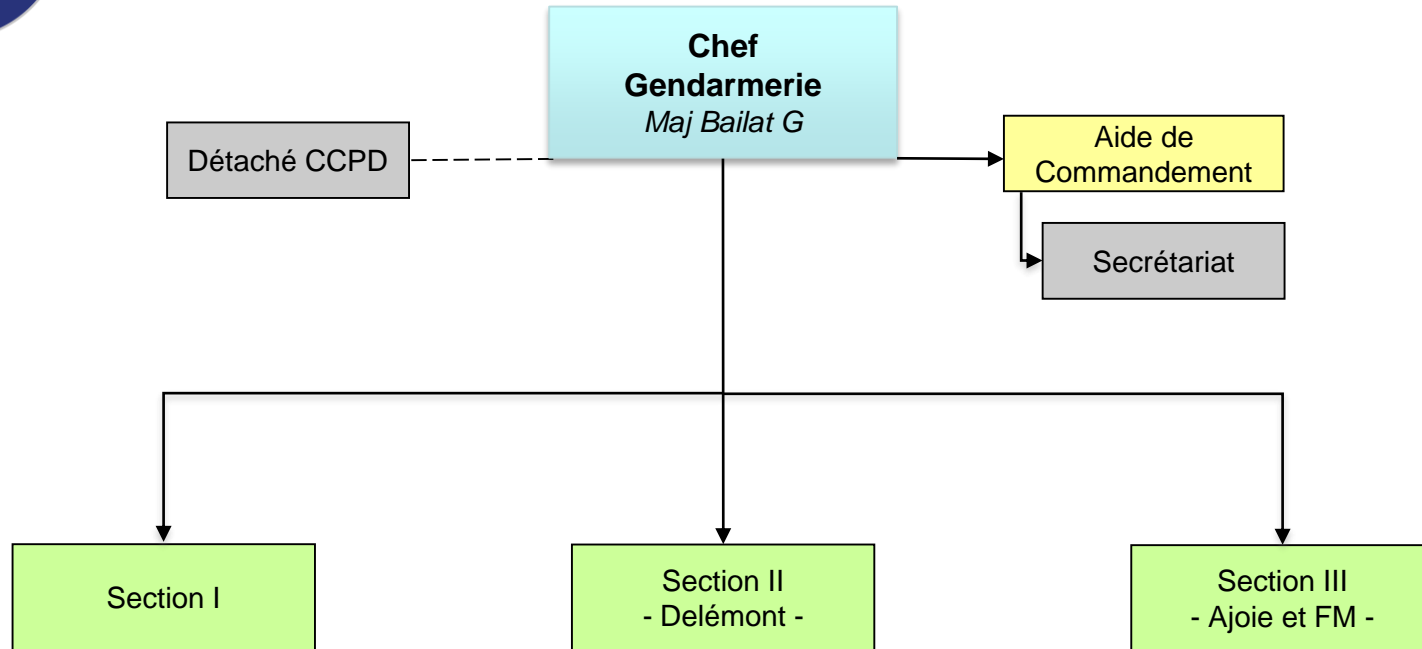
Commandement



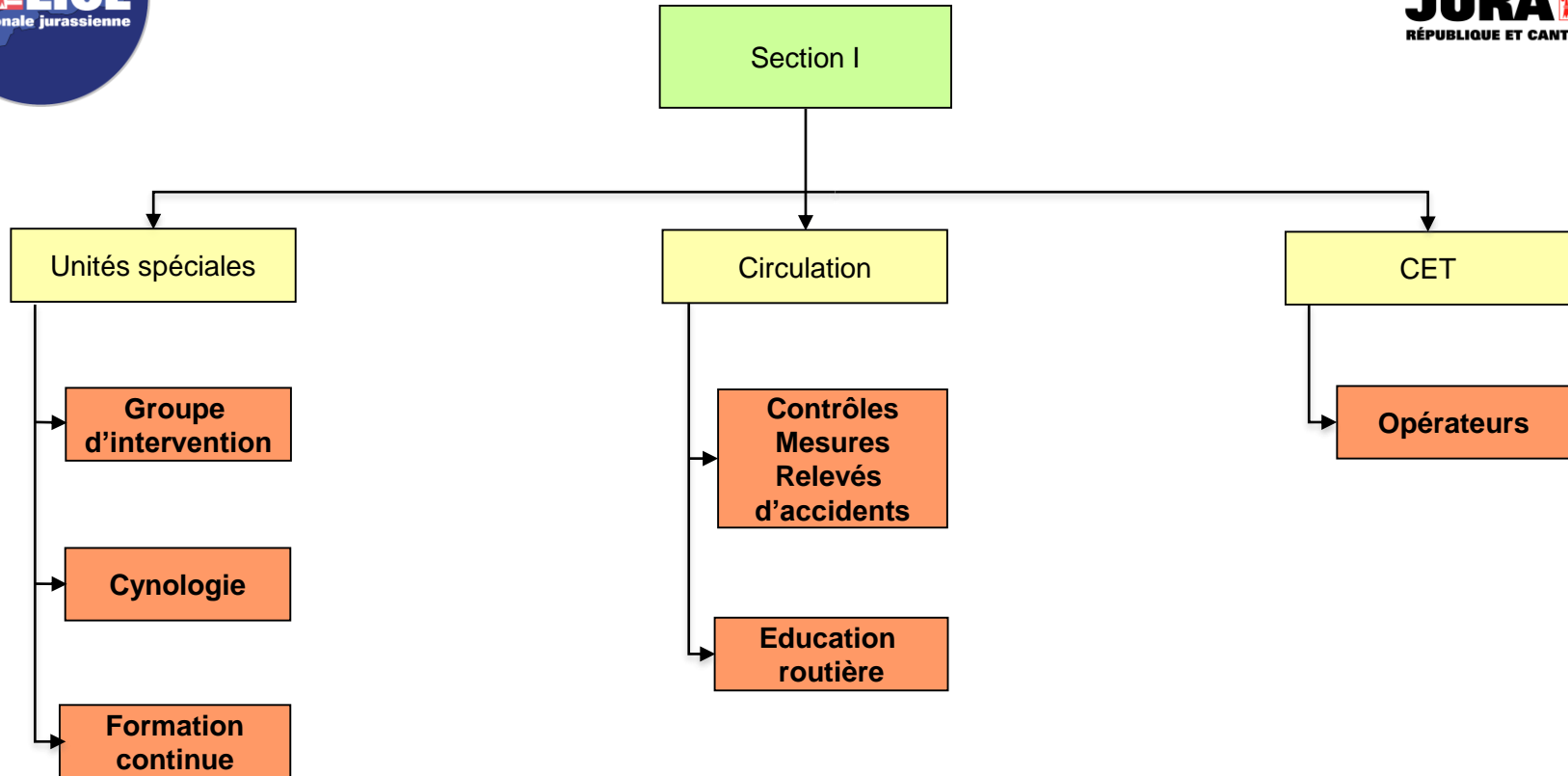
**Adjoints
au Commandant**
Com Div Intenza MJ
Maj Scheder D



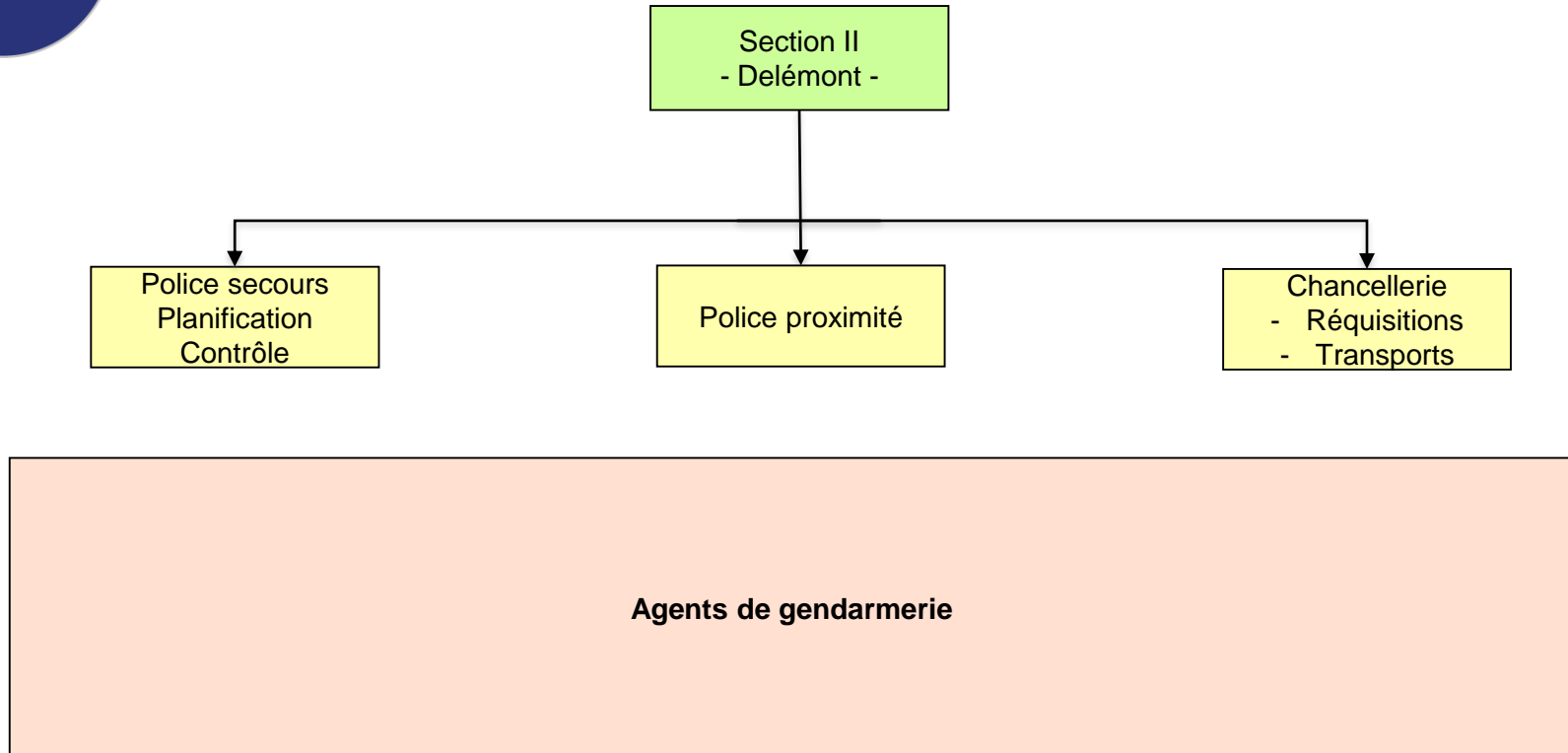
Gendarmerie Commandement



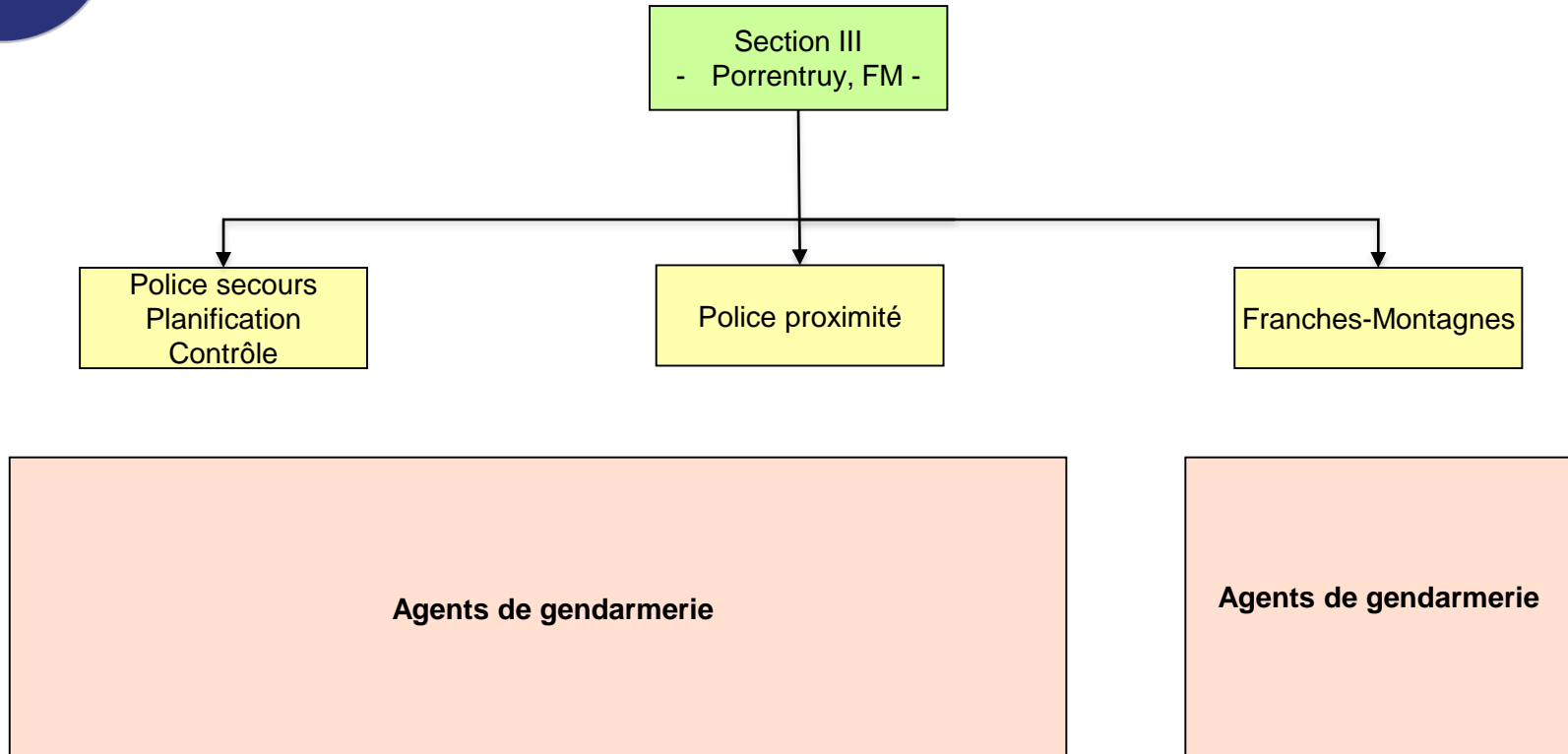
Gendarmerie Section I



Gendarmerie Section II



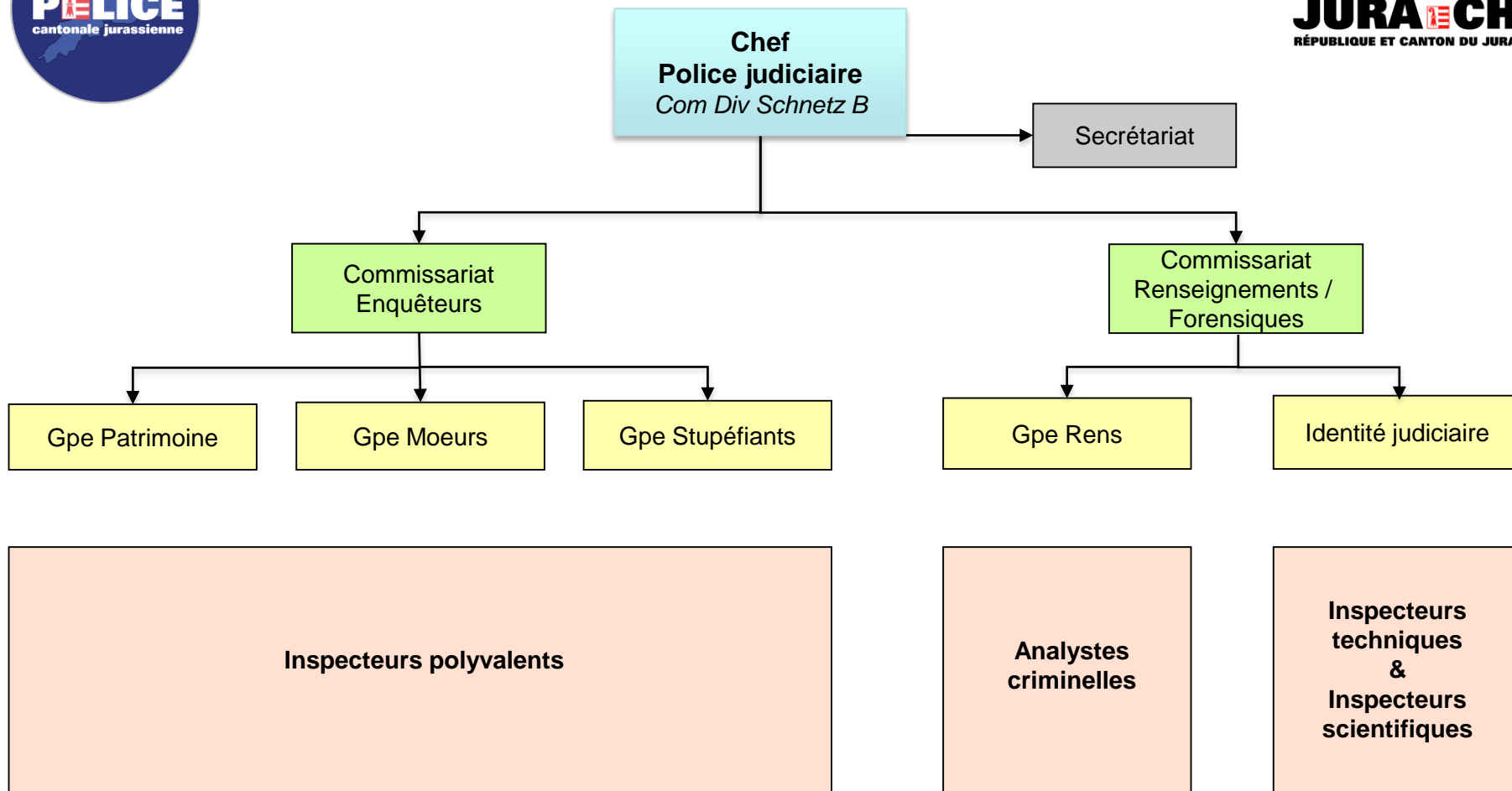
Gendarmerie Section III



Police judiciaire



JURA CH
RÉPUBLIQUE ET CANTON DU JURA



Protection de la Population & Sécurité

