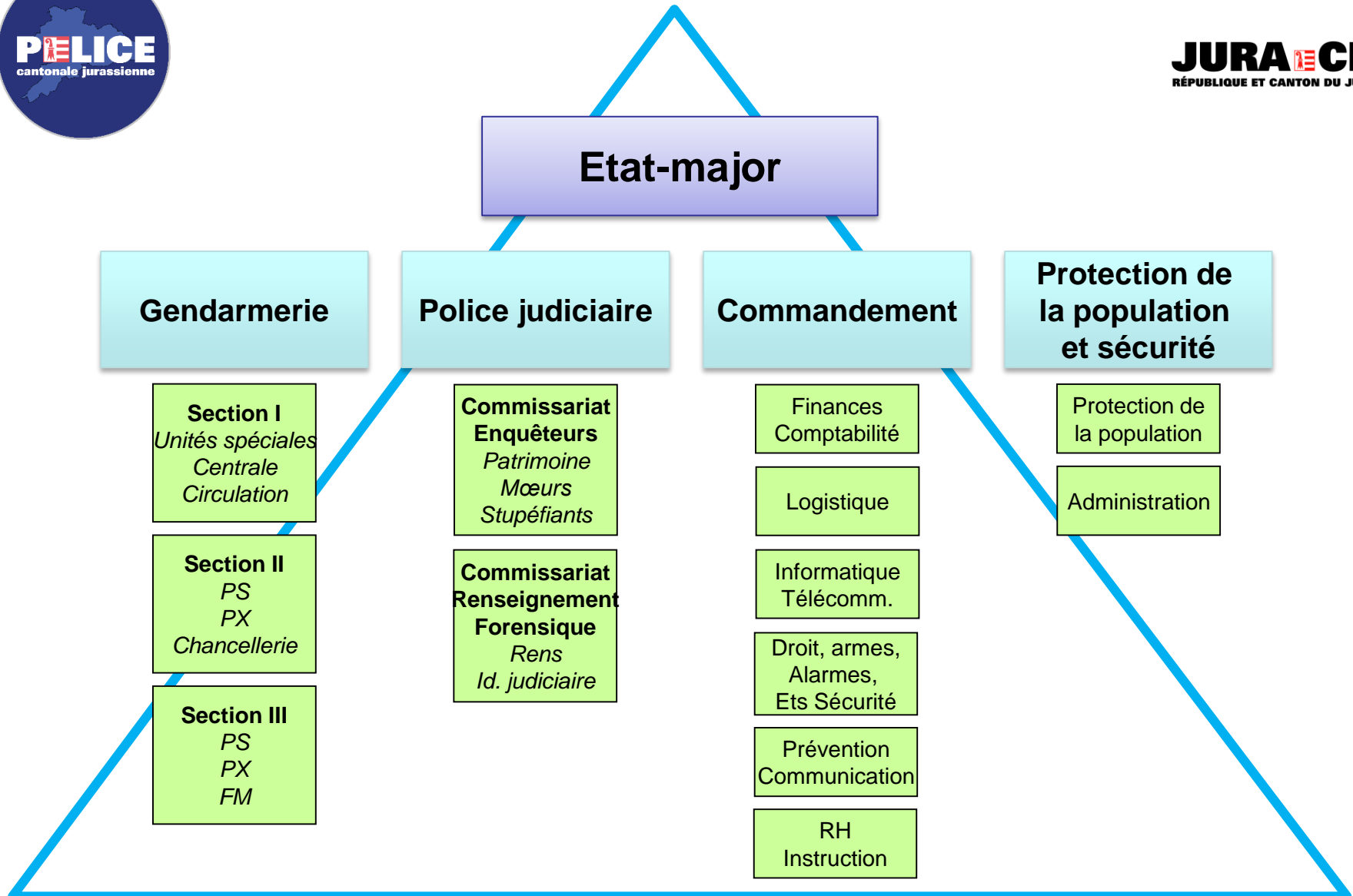
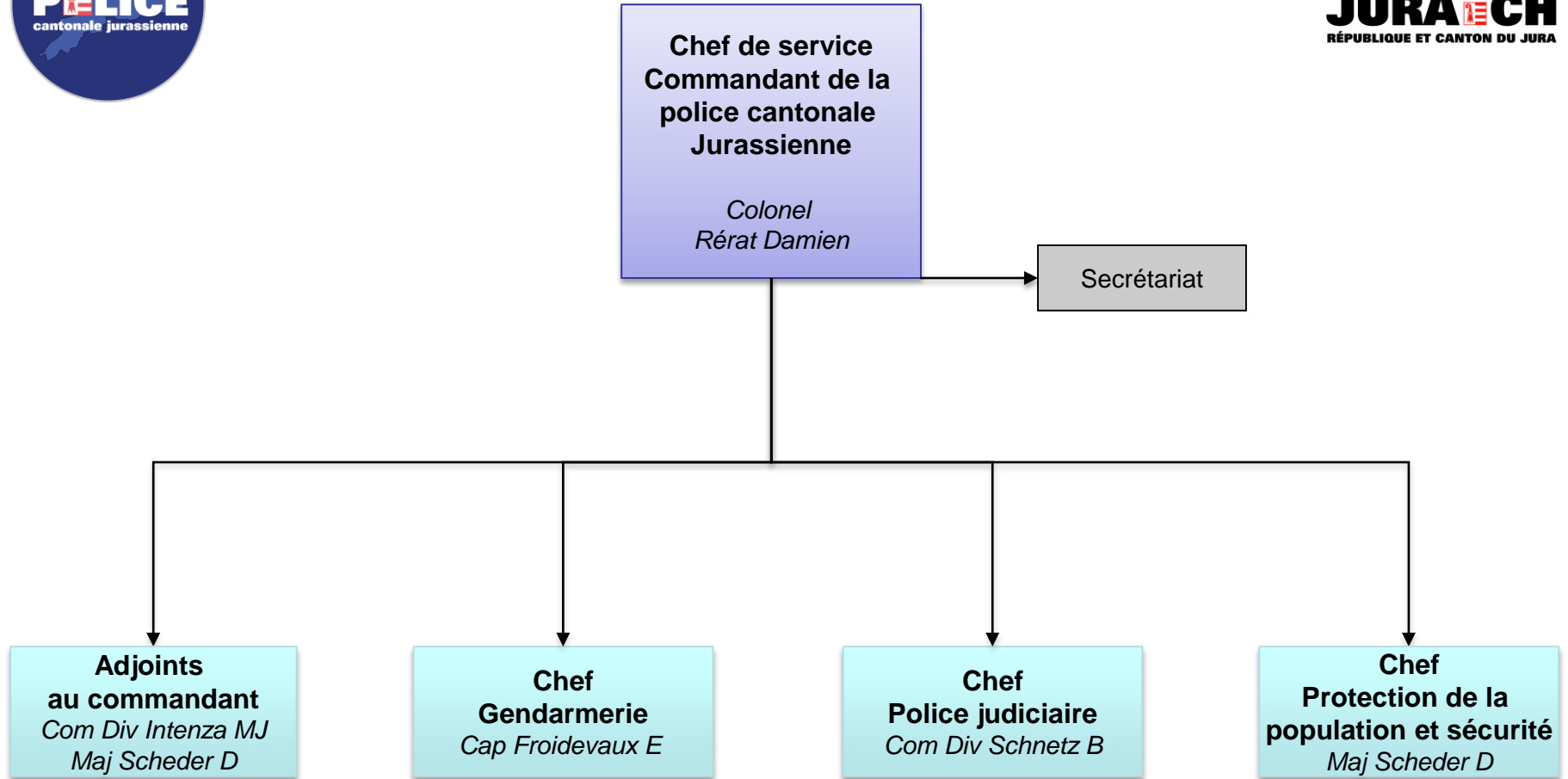




# Organisation générale



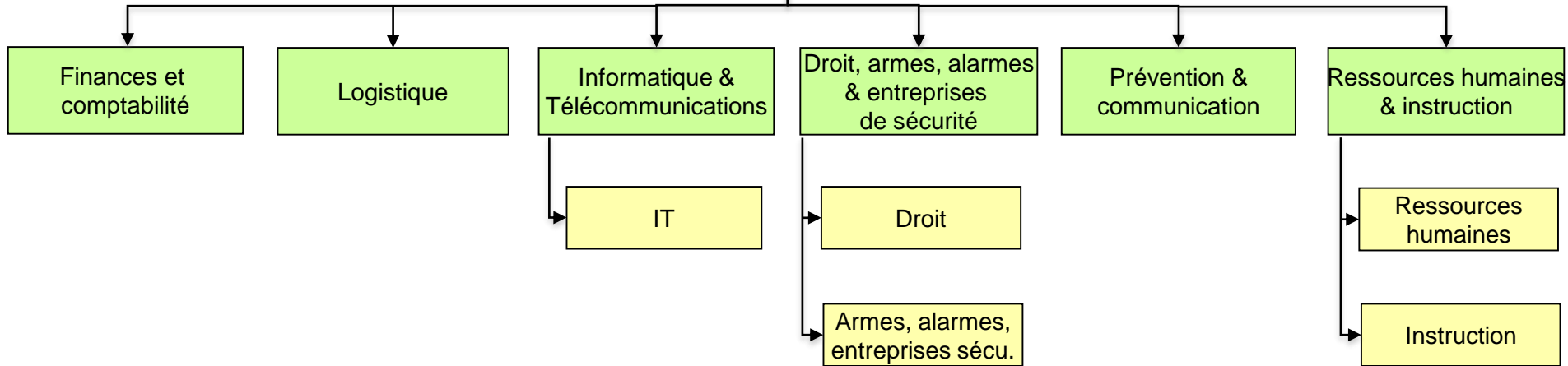
# Etat-major



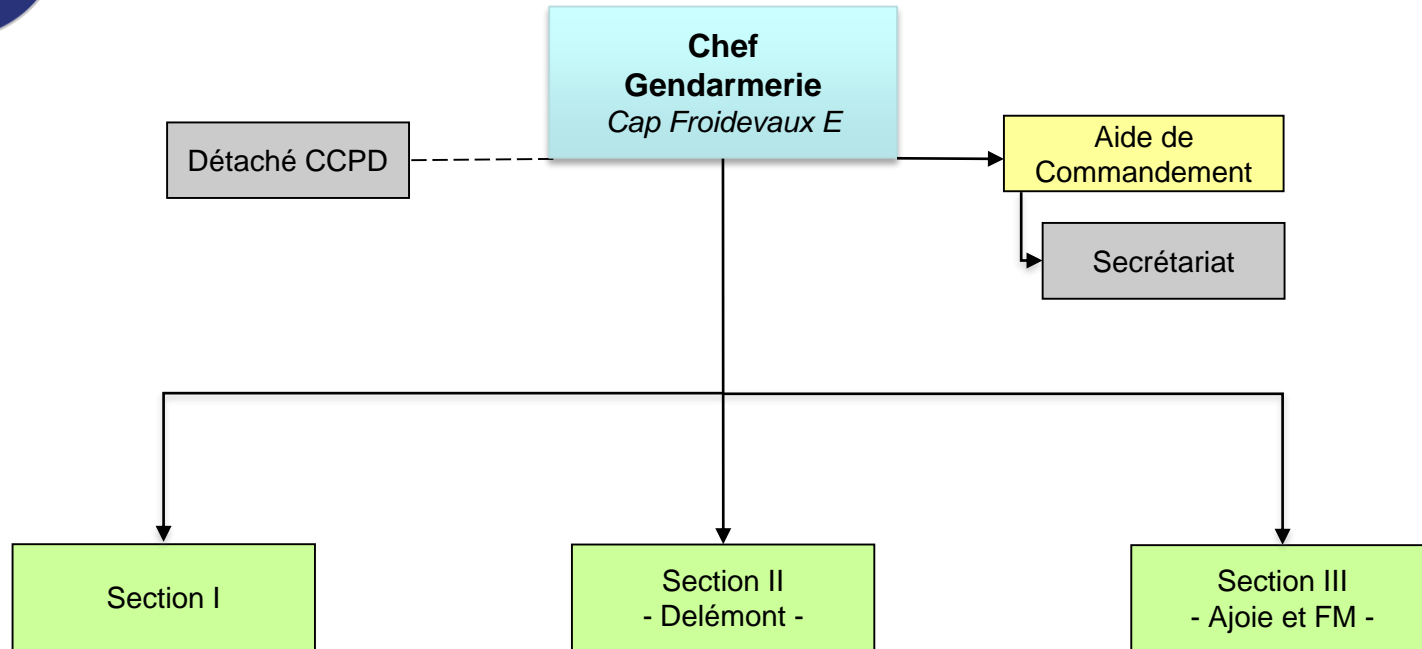
# Commandement



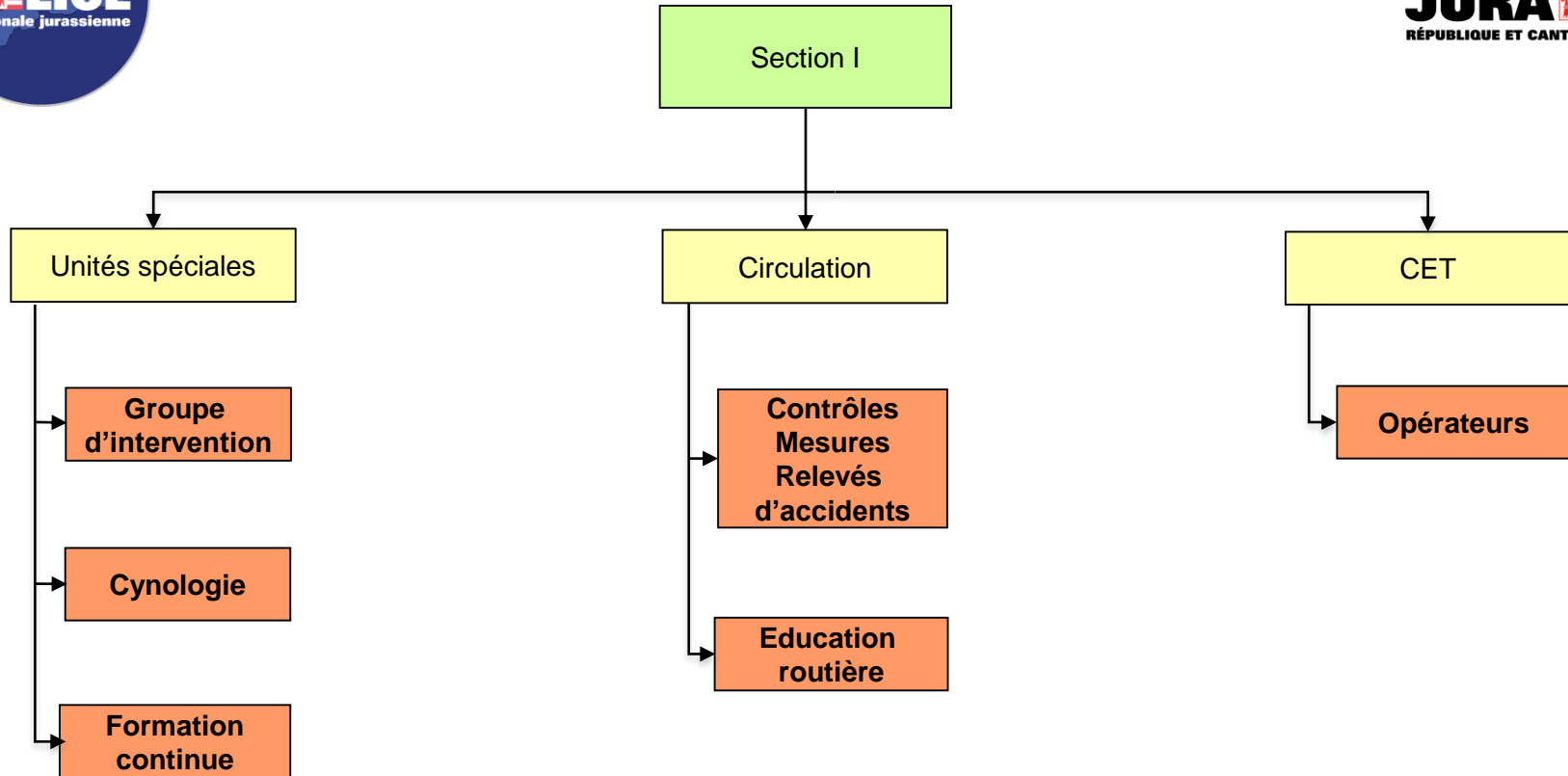
**Adjoints  
au Commandant**  
*Com Div Intenza MJ*  
*Maj Scheder D*



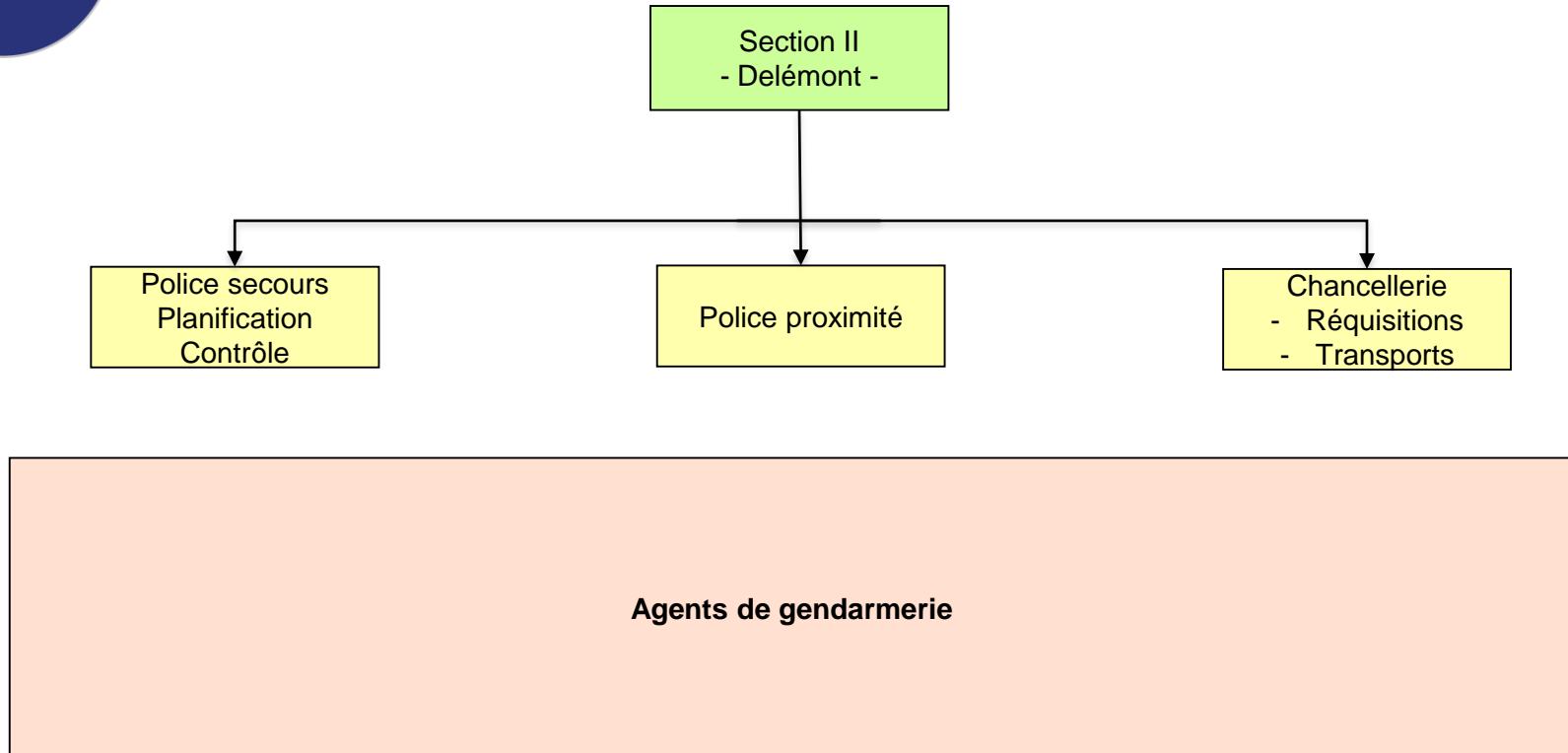
# Gendarmerie Commandement



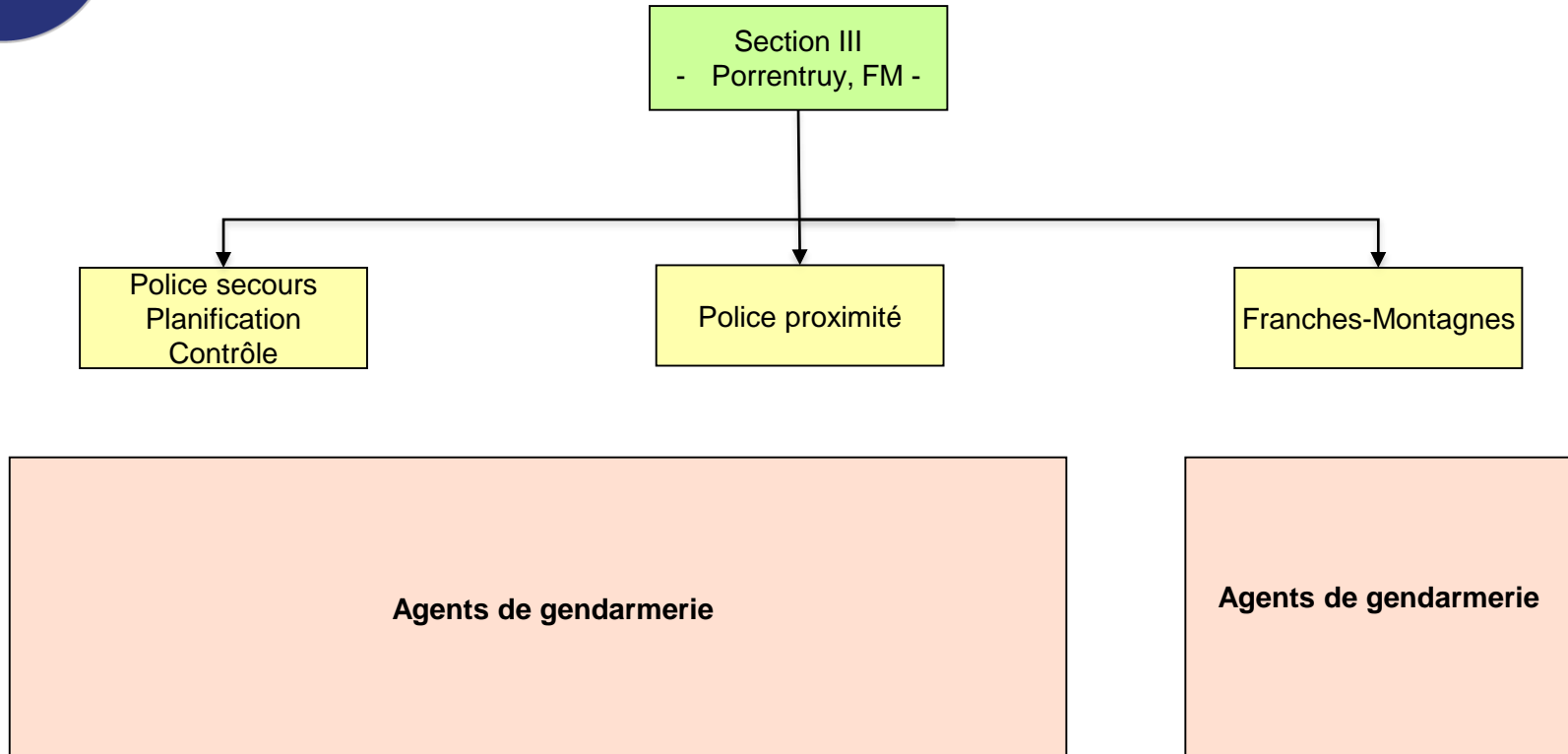
# Gendarmerie Section I



# Gendarmerie Section II

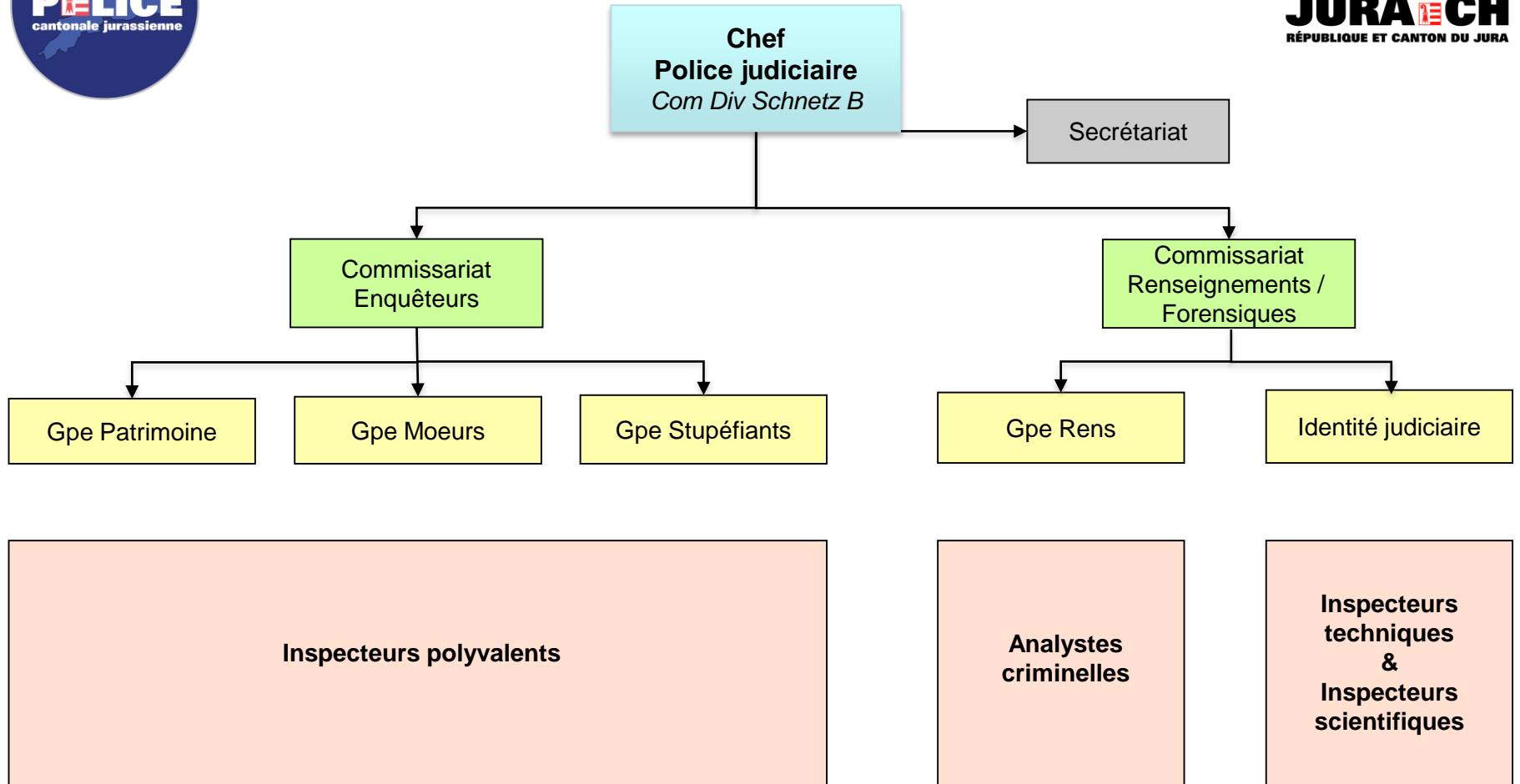


# Gendarmerie Section III





# Police judiciaire



# Protection de la Population & Sécurité

