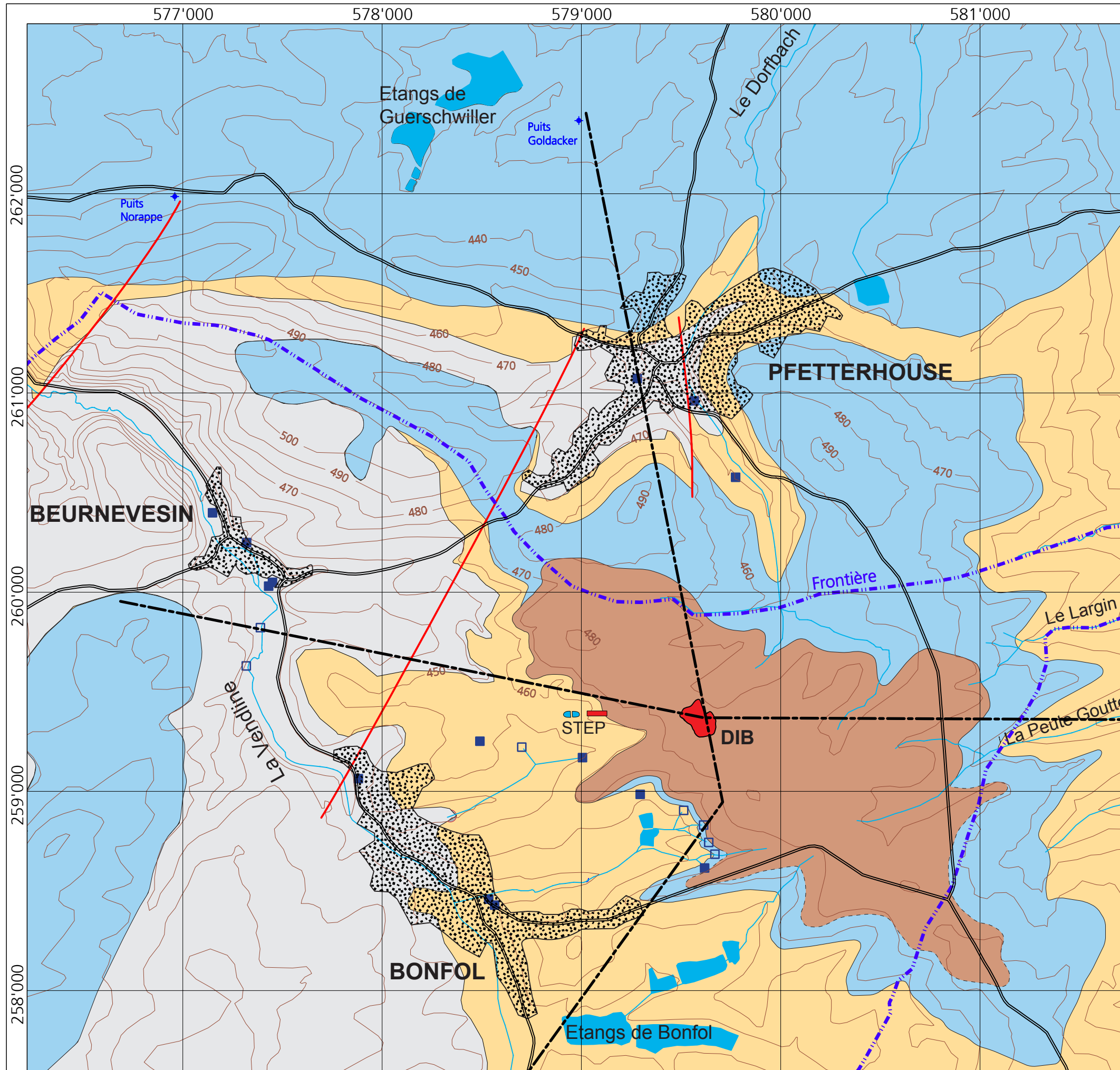


## **Annexes du chapitre 3**









### **Sites et environs**

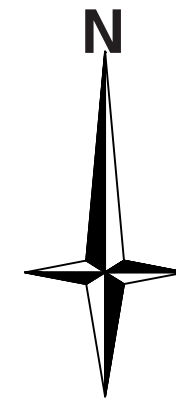
- Annexe 3-A : Carte géologique simplifiée de la région de Bonfol**
- Annexe 3-B : Coupes géologiques de la région de Bonfol**
- Annexe 3-C : Coupes géologiques dans le secteur de la DIB**
- Annexe 3-D : Région de Bonfol, bassins versants des eaux superficielles**
- Annexe 3-E : Plan d'affectation**



### CARTE GEOLOGIQUE SIMPLIFIEE DE LA REGION DE BONFOL

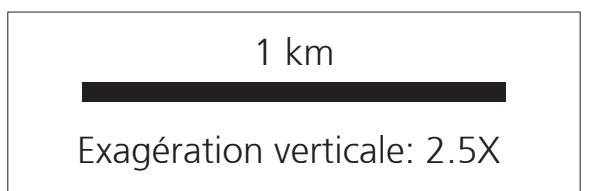
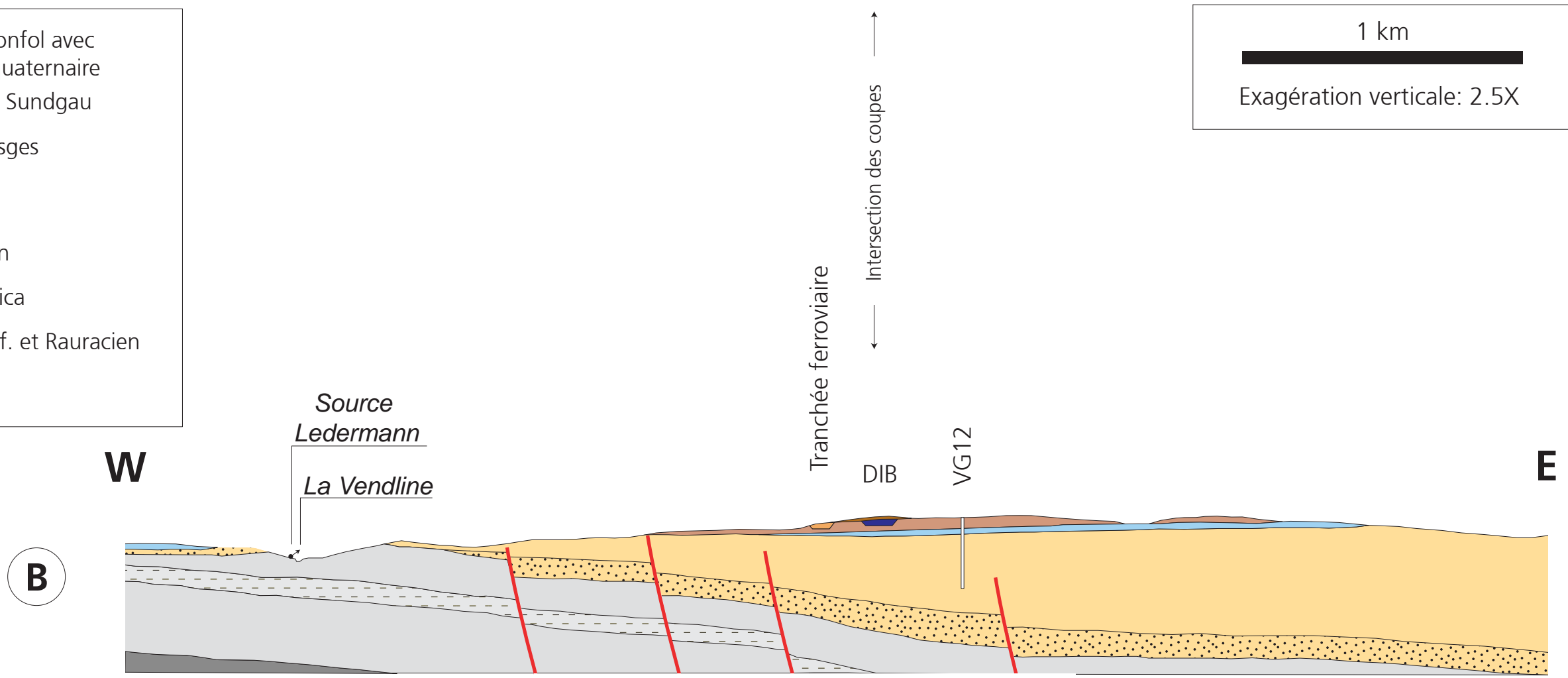
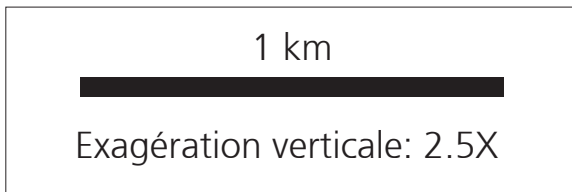
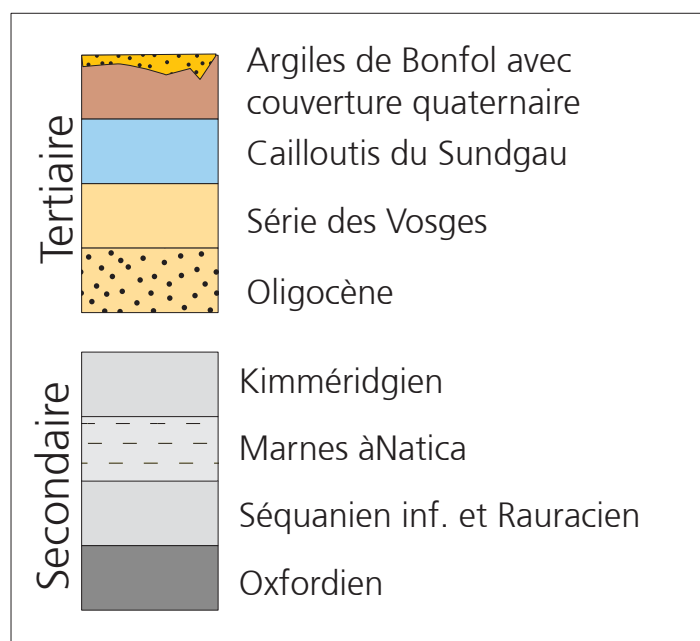
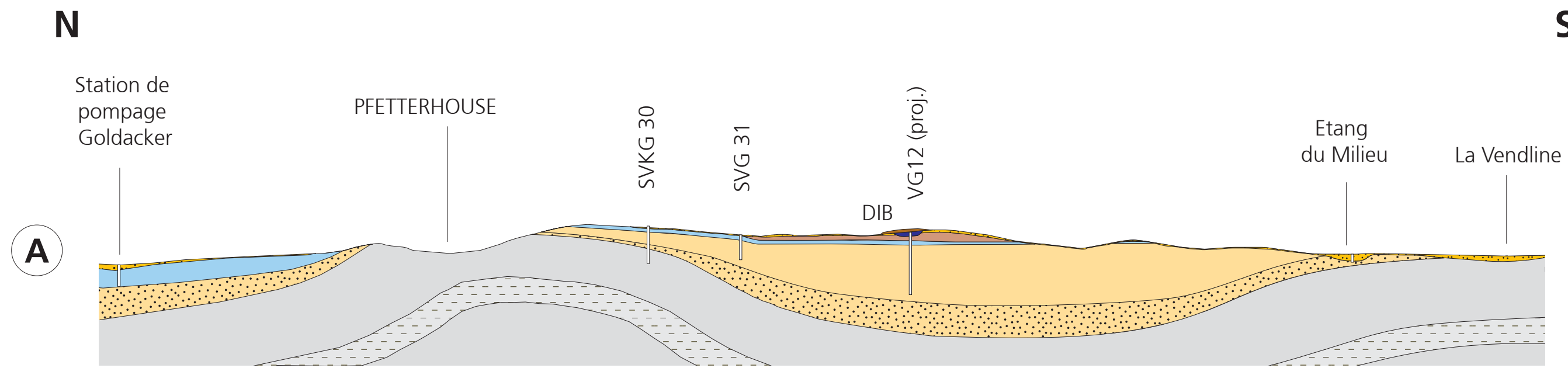
#### Légende

-  Argiles de Bonfol
-  Cailloutis du Sundgau
-  Série des Vosges et Oligocène indifférenciés
-  Calcaires du Malm indifférenciés
-  Failles principales
-  Sources captées
-  Sources non captées
-  Situation des profils géologiques de l'Annexe 3-B

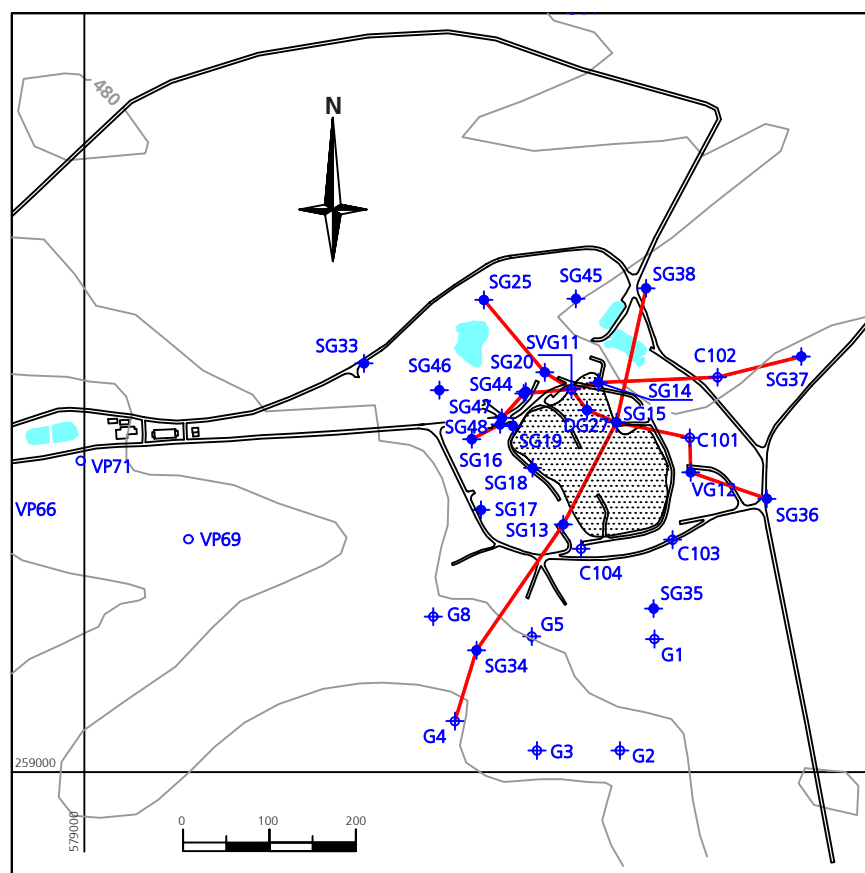
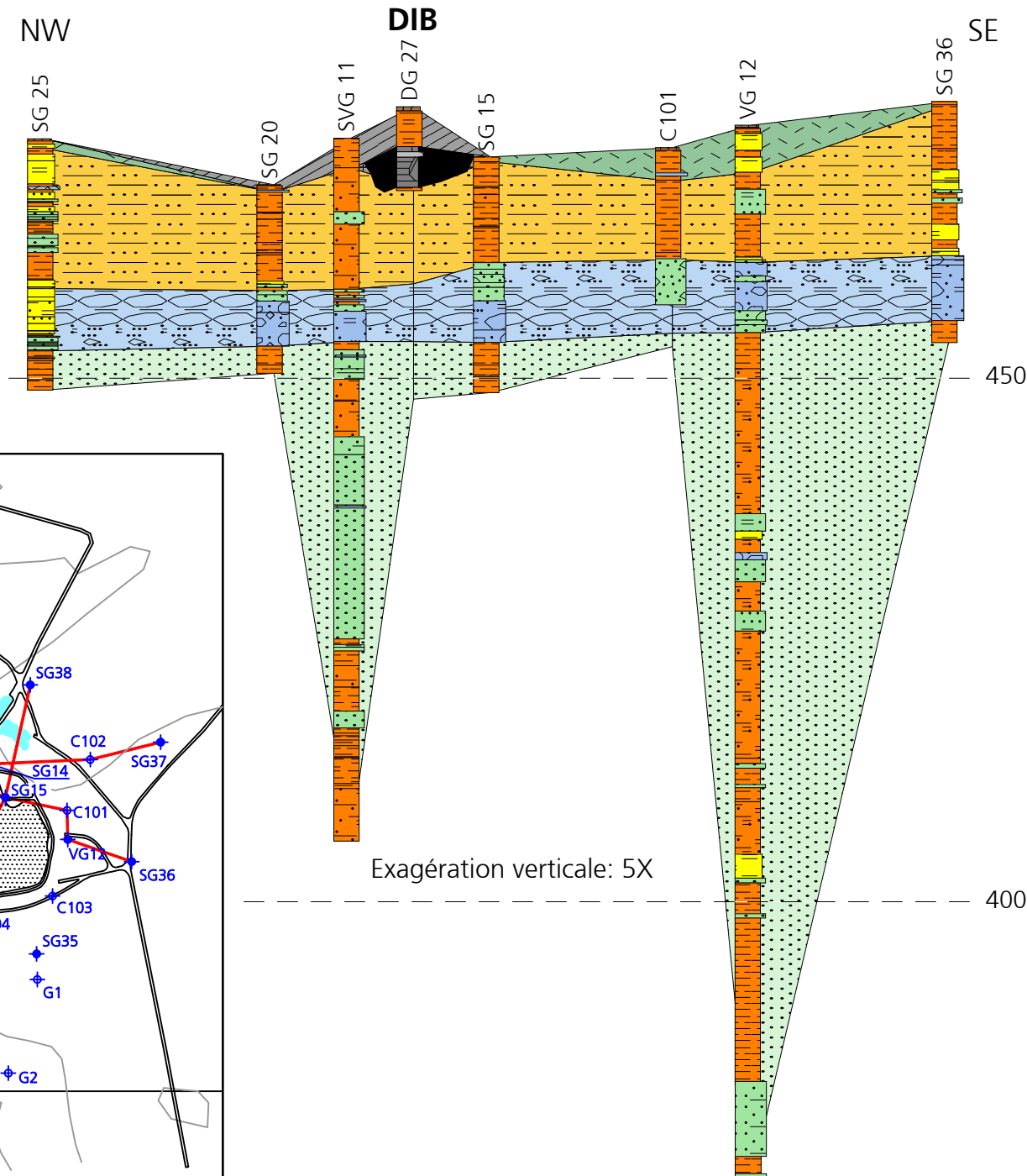
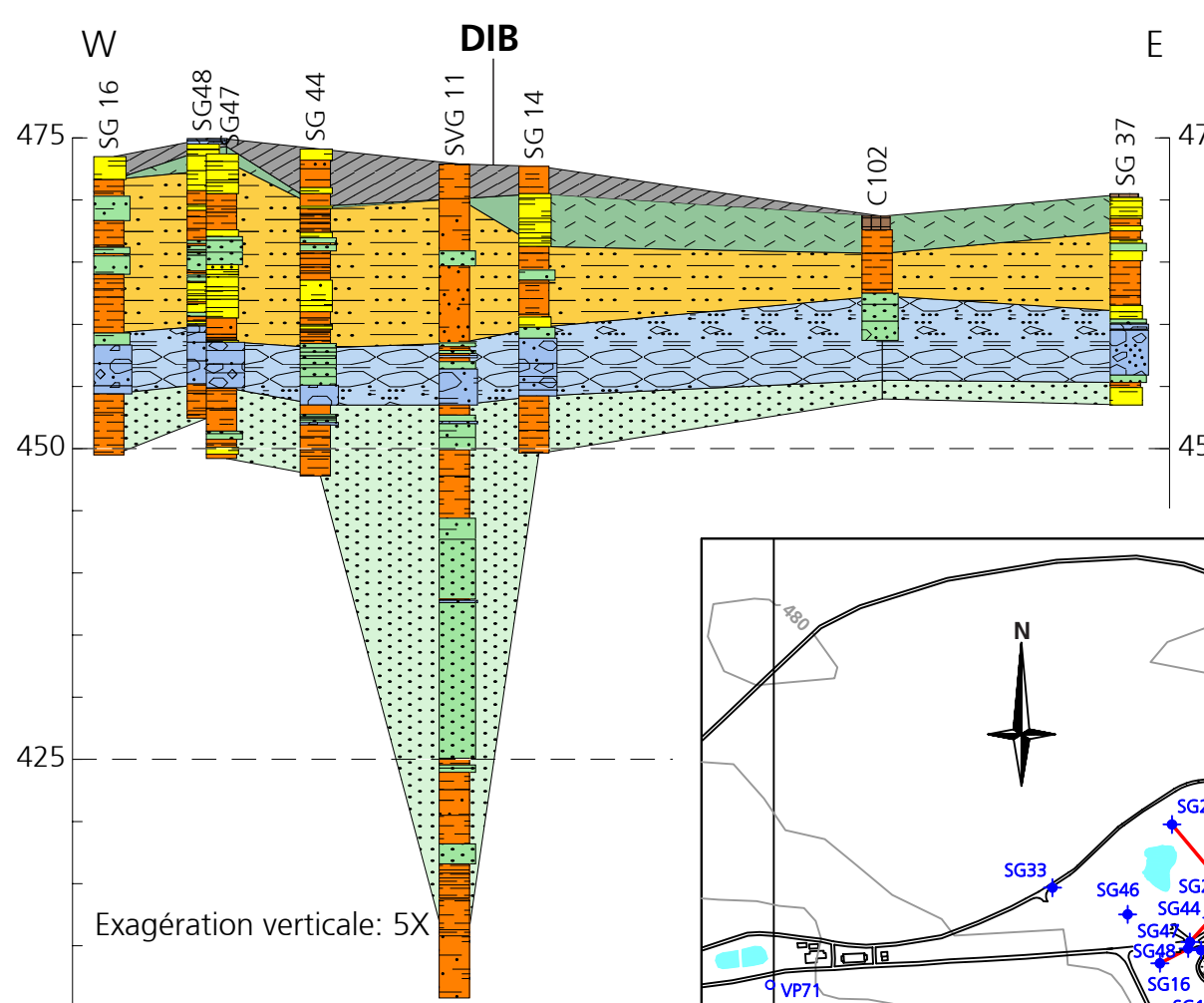
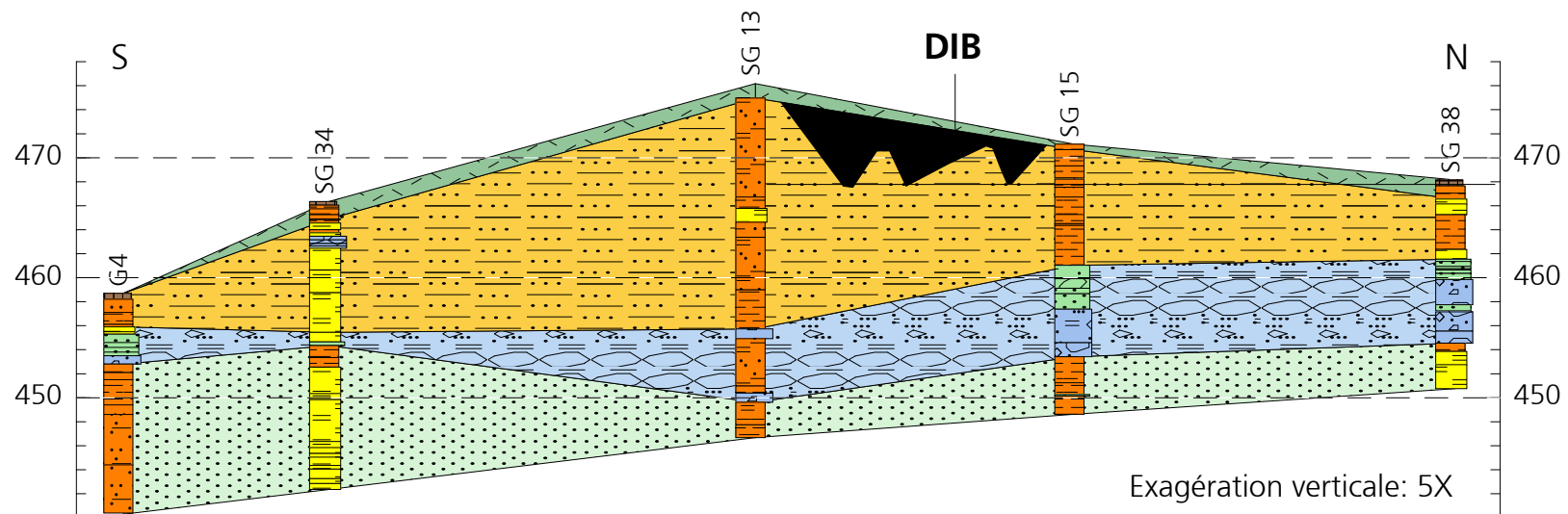


# COUPES GEOLOGIQUES SIMPLIFIEES DE LA REGION DE BONFOL

Situation des coupes: cf. carte géologique de l'Annexe 3-A



### Coupes géologiques dans le secteur de la décharge industrielle de Bonfol



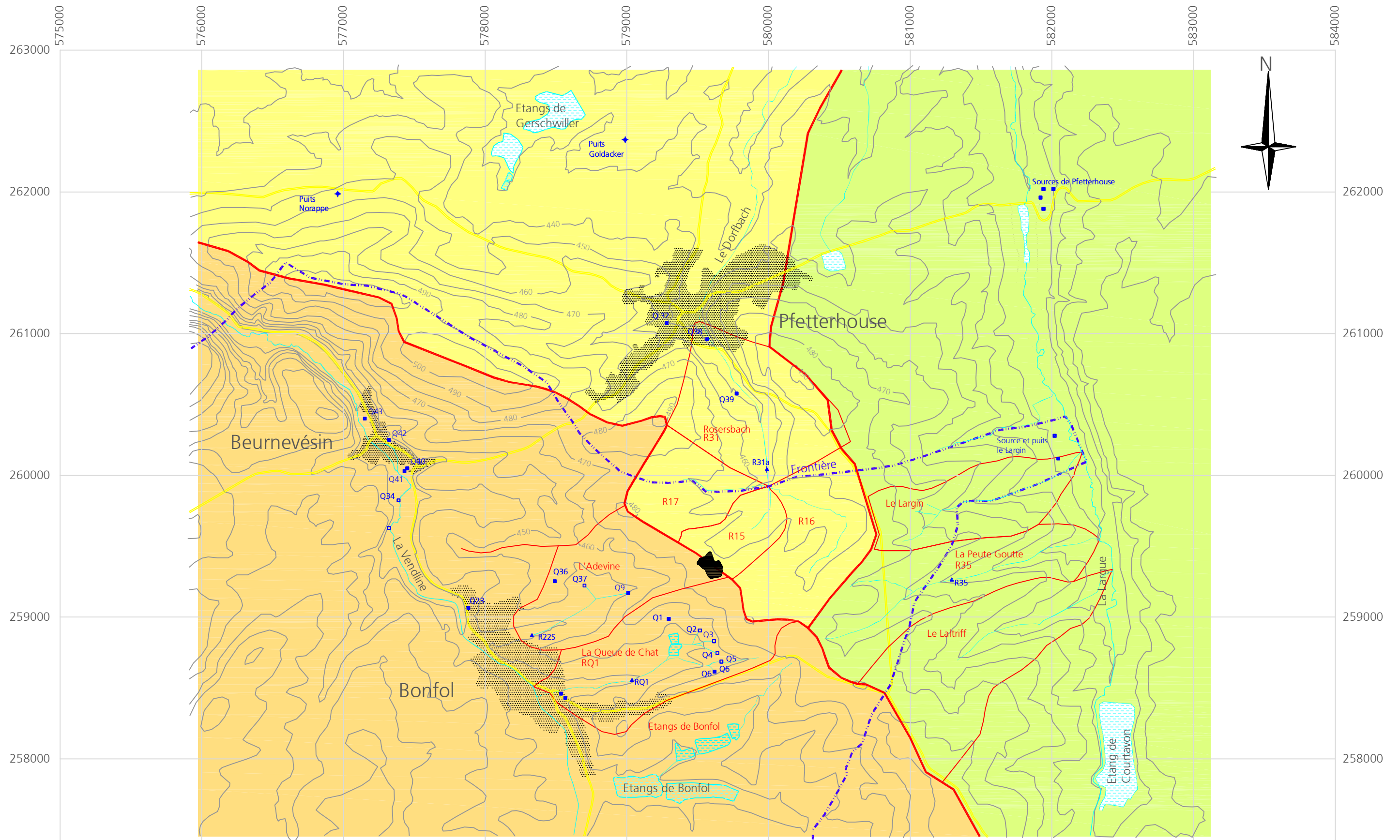
**LEGENDE**

**Formations**

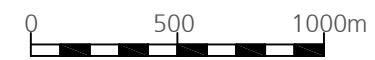
- Remblais
- Couverture quatern.
- Argiles de Bonfol
- Cailloutis du Sundgau
- Série des Vosges

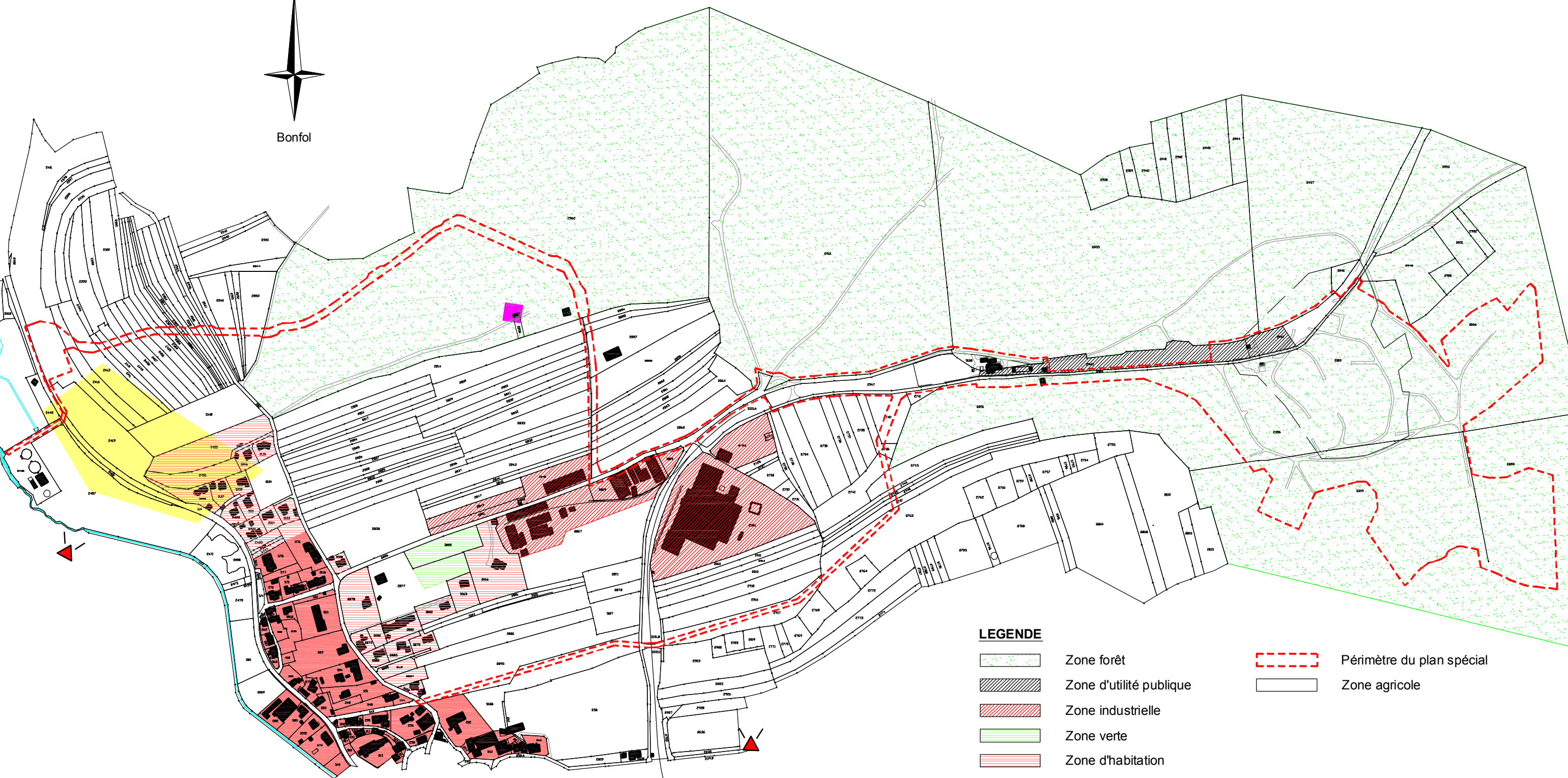
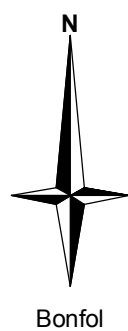
**Lithologies**

- terre végétale
- argile
- argile limoneuse
- argile sableuse
- argile limono-sableuse
- argile sablo-graveleuse
- limon
- limon argileux
- limon sableux
- limon argilo-sableux
- limon graveleux
- sable
- sable argileux
- sable limoneux
- sable limono-argileux
- sable graveleux
- gravier
- gravier argileux
- gravier limono-sableux
- gravier sableux




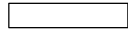

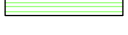







- Bassin versant de la LARGUE
- Bassin versant du DORFBACH
- Bassin versant de la VENDLINE
- Ligne de partage des eaux superficielles
- - - Limite de sous-bassin





**LEGENDE**

	Zone forêt		Périmètre du plan spécial
	Zone d'utilité publique		Zone agricole
	Zone industrielle		
	Zone verte		
	Zone d'habitation		
	Zone village		
	Zone de protection archéologique		
	Monuments culturels		
	Point de vue		

