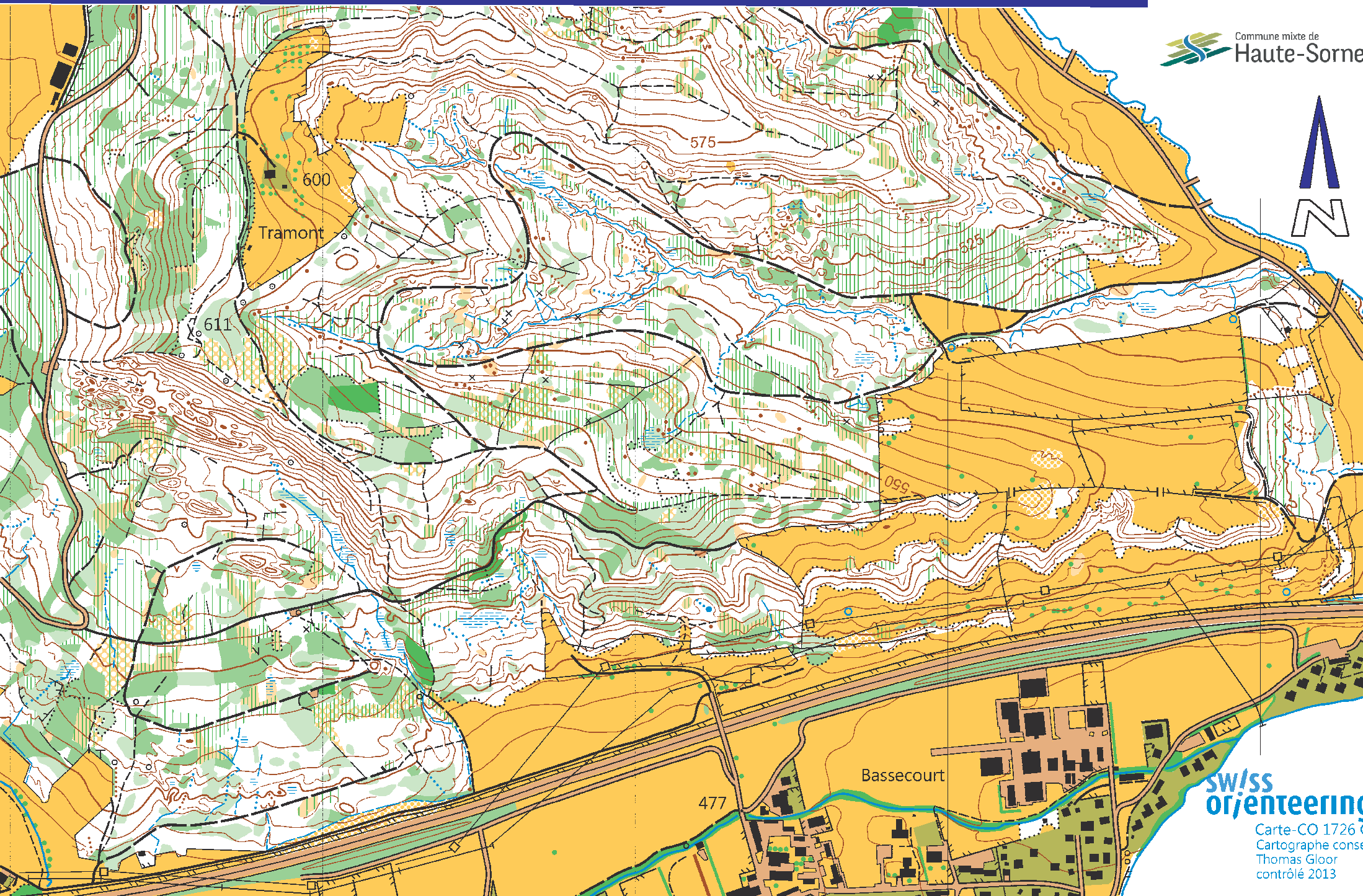
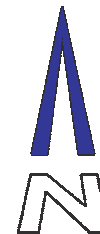


Tramont

Echelle 1:7'500 Equidistance 5 m Etat 2013

JURA CH
RÉPUBLIQUE ET CANTON DU JURA

Commune mixte de
Haute-Sorne



**swiss
orienteering**
Carte-CO 1726 Q
Cartographe conseil
Thomas Gloor
contrôlé 2013